

GREGORY BEDFORD

EMALIE ORTEGA



ETERNUS

a MICHAEL J. STEWART film

Electronic Press Kit



Contact:

info@unstoppablepacific.com

Unstoppable Pacific Productions

www.unstoppablepacific.com

Contents

- Logline & Synopsis.....3
- *Eternus* Facts.....4
- Production Notes (trivia) 4
- Director's Statement.....5
- Production Credits.....7
- Director & Cast Biographies.....8
- Supplied Media Index.....9

Trailer and "Making of" video at www.unstoppablepacific.com.



Logline

On a desperate spiritual journey, one man hits a dead end.

Synopsis (125-word)

"Since the day you were born... God has despised you."

The Man is trapped, a prisoner in a cancer-ridden body, living out his final days. The only comfort left him is his undying faith, his deep desire to become closer to God. He loves TV evangelist Pastor Pete, and watches the show... religiously. Late in the night, a surprise guest shows up, bringing death the way one might bring a bottle of wine for dinner. The boundaries that have held him captive in this world are torn down, and worlds beyond become known. God promised him eternal salvation. But is the promise... broken? The man learns his place in the universe as he is plunged into a nightmarish world of monsters and horror, where existence itself is torture...





Facts

Title: Eternus

Directed by: Michael J. Stewart

Starring: Gregory Bedford, Emalie Ortega

Running time: 14 min

Black & White

Scale 1.33 : 1

Production company: Unstoppable Pacific

Production completed: April 2009

Copyright: 2009 Unstoppable Pacific

Related Genres: Horror / Thriller / Religious / Spiritual

Eternus on IMDB: <http://www.imdb.com/title/tt1427867/>

Production Notes

x For blood in *Eternus*, Stewart employed the same stuff Hitchcock used in *Psycho*: chocolate syrup.

x There was so much stage fog on set, no one noticed that half of actress Ortega's prosthetic makeup had fallen off! After seeing the footage, the filmmakers had to reshoot all her takes.

x The dialogue in the burglar scene was totally improvised. The director's instructions to actor Bedford were, "Just open the door and we'll see what happens."

x Stewart was going to hire an actor for the role of Pastor Pete, but decided to screen-test himself for the role. That screen-test ended up in the final film.





Director's statement

Eternus is not a slam against religion. The film has no message. It is primarily a creative experiment designed to give the viewer the visual and aural experience of what it might be like to be sent to Hell. I tried to leave myself out of the process, to work as much on instinct as possible, and let my subconscious do the driving. This, I figured, would result in something that is pure. And, for the most part, it worked. I don't necessarily feel, when seeing the movie, that "I" made it. It was my subconscious. A part of me that isn't the waking everyday part of me that I am familiar with. So making the movie, in that sense, was a process of self-discovery.

If I were to look at the film and try to figure out what the message is, I think I would say it is that there should be a God, and he should love every single person. Or, more broadly, that every single person should be loved and be included in whatever context is at hand, such as in society. I find the main character's complete abandonment by the God he loves to be very poignant. But this is an aspect of life that is always with us in this world. From foster children to the elderly living in retirement homes to animals in shelters, many have, one way or another, been abandoned to some degree. Many just want a home, a place where they belong, but there is not one for them. I also find a parallel with the Spielberg film "AI", which, concept-wise, I thought was brilliant. That film probably had an influence on *Eternus* even though I was unaware of it. (Another influence, of which I was quite aware, and quite prepared to rip-off, is the brilliant work of Lucio Fulci and his filmmaking team.)

I am grateful to the very talented people who made this film with me: Greg, Emalie, Madeline and Chris. Greg's job must have been especially hard given that his character barely existed, even on paper. It was intentional that the character was vague, to serve the story, but it doesn't give an actor much to sink his teeth into. Greg brought him to life (my



Director's statement (cont'd)

favorite part of the filmmaking process) and made him human and made us care about him. I could not have found a better actor for the part. My long-time friend Emalie surprised me with the ferocity she brought to her roles. Again, I couldn't have asked for a better actress (or a more dedicated one). Madeline pops up briefly in the middle of the film, but when it's over everyone is talking about her; the audience loves her. Chris, another long-time friend, laid down the great drum tracks that help give the film the primal energy that makes it work. There is a piece of each of us in the film.

At the time of this writing, only a handful of people have seen the film. Some people say they like the artistic nature of it. Some people say they "don't get it". Some people do not wish to watch it because of its subject matter, as if it were "taboo", which I find very interesting. Some probably feel that God would not approve of this film. I disagree. But I will enjoy its controversial aspect.

In the end, the film has to speak for itself. We made it, and I called it "Eternus". That's all I know.

Michael J. Stewart

April 2009





Production Credits

Cast

Man

GREGORY BEDFORD

Angel of the Hidju

EMALIE ORTEGA

The Creatures

EMALIE ORTEGA

Girl

MADELINE O'KENNON

Pastor Pete

MICHAEL J. STEWART

Crew

Director / Producer / Writer / Cinematographer / Editor /

Music / Sound Design / Special Makeup FX

MICHAEL J. STEWART

Congo Drums

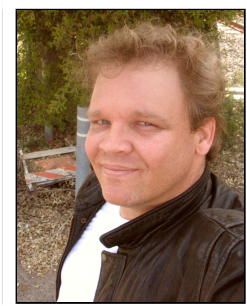
CHRIS BRUNO



Biographies

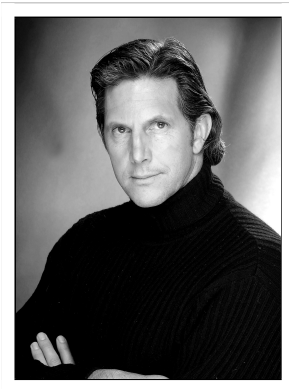
Michael J. Stewart / Director

Michael is a writer/producer/director in the San Francisco Bay Area. He founded his production company Unstoppable Pacific after a term in the army, a degree in computer science, and years working in the tech industry. His films include *Smoke O' Lantern*, *Blood Reaper* and the short film *Ray's Day*. He believes the most important job of a filmmaker is to strive to push creative boundaries and constantly grow as a storyteller and artist.



Gregory Bedford / "Man"

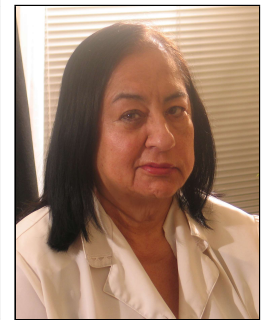
Gregory is an accomplished actor and member of the Screen Actors Guild. He studied acting and stand up comedy for years and has appeared in many stage productions, independent and major studio films, including *Terminator 2: Judgement Day*, and has performed voice over work in multiple video games including *Star Wars* and *Jurassic Park* games.



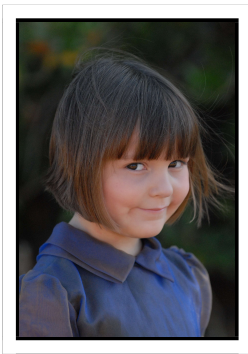


Emalie Ortega / "Angel of the Hidju"

A Stanford Law grad, Emalie came to the film acting field after many years as a college English teacher, Paralegal Director at University of Santa Clara, and an attorney for the San Jose Public Defenders Office. She has appeared in *Blood Reaper* and *Smoke O' Lantern*.



Madeline O'Kennon / "Girl"






Madeline O'Kennon has been an actress and model since the age of three. She lives just outside the San Francisco Bay Area with her mother and stepfather, two cats and a turtle. She is a vegetarian, and has never eaten meat - except for the one time she ate fish sticks at pre-school!

She loves singing and entertaining, making up her own songs and "performing" them daily. *Eternus* is her first "horror" film, but she has since also played a child ghost. Her mother loves to see her in darker, dramatic roles.

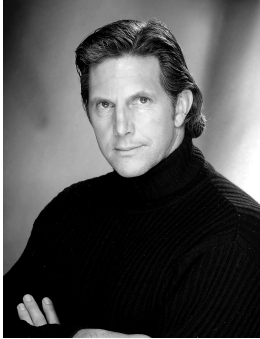





Supplied Media

Stills

 <p>The smell of flesh in Hell is sweet.</p>	 <p>In Hell you are alone... but not alone.</p>	 <p>The horror of flesh is forever in Hell.</p>
<p>name: 1.jpg format: JPEG dimensions: 2592 x 2175 size: 2.4 MB</p>	<p>name: 2.jpg format: JPEG dimensions: 2592 x 2175 size: 3.7 MB</p>	<p>name: 3.jpg format: JPEG dimensions: 2592 x 2175 size: 2.4 MB</p>

Headshots

 <p>Gregory Bedford "Man"</p>	 <p>Emalie Ortega "Angel of the Hidju"</p>	 <p>Madeline O'Kennon "Girl"</p>	 <p>Michael J. Stewart Director</p>
<p>name: greg.jpg format: JPEG dimensions: 2275 x 2989 size: 1 MB</p>	<p>name: emalie.jpg format: JPEG dimensions: 1441 x 1813 size: 1 MB</p>	<p>name: madeline.jpg format: JPEG dimensions: 2592 x 3872 size: 4.3 MB</p>	<p>name: michael.jpg format: JPEG dimensions: 1584 x 1944 size: 1 MB</p>

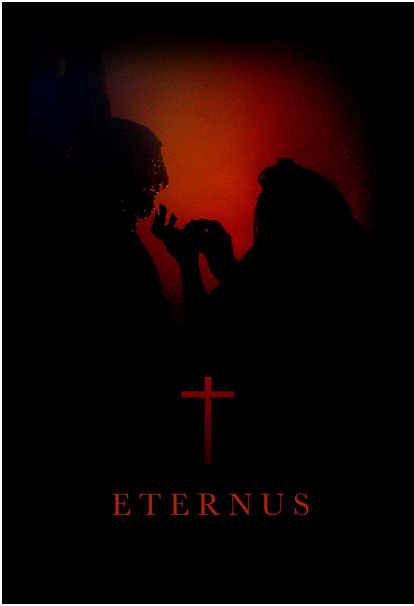
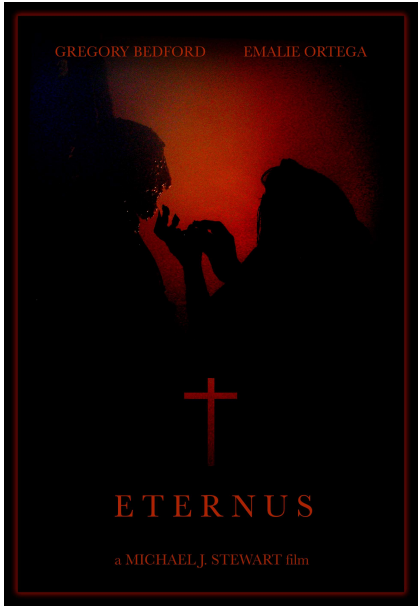


Behind the scenes / FX photos

		
<p>Greg awaits makeup</p> <p>name: greg_fx_1.jpg format: JPEG dimensions: 2592 x 1944 size: 2.3 MB</p>	<p>Greg dries in the sun</p> <p>name: greg_fx_2.jpg format: JPEG dimensions: 2592 x 1944 size: 2.4 MB</p>	<p>Greg gets a second coat</p> <p>name: greg_fx_3.jpg format: JPEG dimensions: 2592 x 1944 size: 1.7 MB</p>
		
<p>Emalie's first coat dries</p> <p>name: emalie_fx_1.jpg format: JPEG dimensions: 2592 x 1944 size: 2.1 MB</p>	<p>Emalie dries her makeup with blowdryer</p> <p>name: emalie_fx_2.jpg format: JPEG dimensions: 2592 x 1944 size: 2.2MB</p>	<p>Emalie is ready for her costume</p> <p>name: emalie_fx_3.jpg format: JPEG dimensions: 2592 x 1944 size: 3.2 MB</p>



One-sheet artwork

 A vertical one-sheet artwork for the film 'Eternus'. It shows the silhouettes of two figures, a man and a woman, facing each other in a close embrace. The background is a gradient of dark red to black. A large, stylized red cross is centered below the figures. The word 'ETERNUS' is written in orange-red capital letters at the bottom.	 A vertical one-sheet artwork for the film 'Eternus', similar to the first but with credits. It features the same silhouettes and red cross. At the top, the names 'GREGORY BEDFORD' and 'EMALIE ORTEGA' are listed in small white text. At the bottom, 'a MICHAEL J. STEWART film' is written in small white text. The word 'ETERNUS' is in orange-red capital letters.
<p>name: eternus_onesheet.jpg format: JPEG dimensions: 1939 x 2830 size: 1.8 MB</p>	<p>name: eternus_onesheet_with_credits.jpg format: JPEG dimensions: 1939 x 2830 size: 2 MB</p>